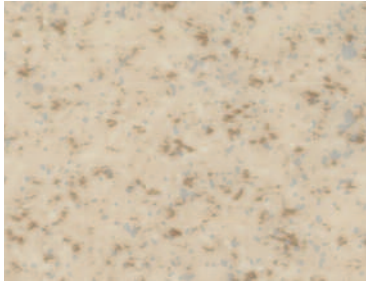




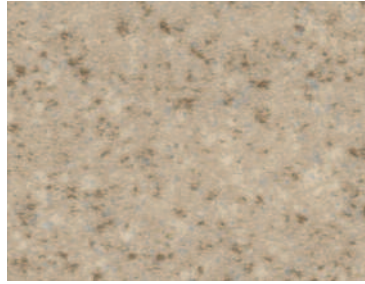
# Mineral fx™

HETEROGENEOUS



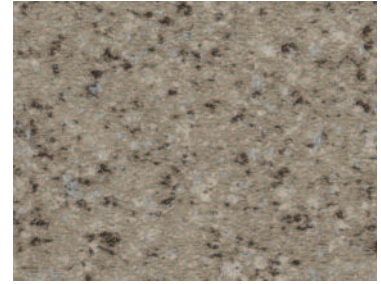
Silica Sand 9800 w/r 9800

NCS S 2005-Y30R



Mica Sand 9801 w/r 9801

NCS S 3010-Y20R



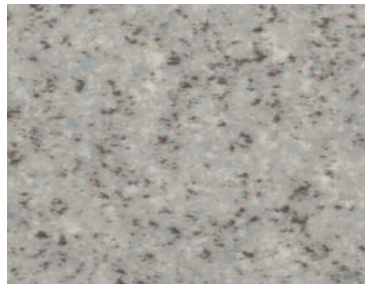
Earth 9802 w/r 9802

NCS S 4005-Y50R



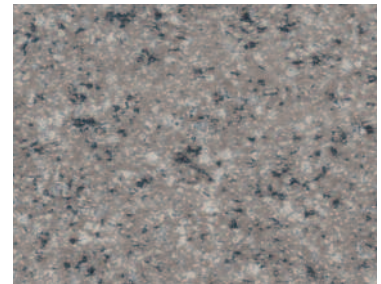
Mercury 9803 w/r 9803

NCS S 2002-Y50R



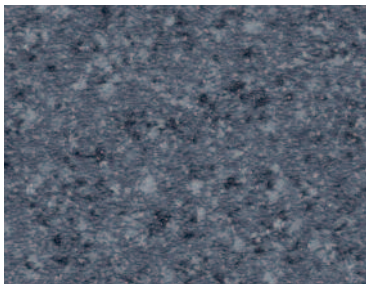
Zinc 9804 w/r 9804

NCS S 3500-N



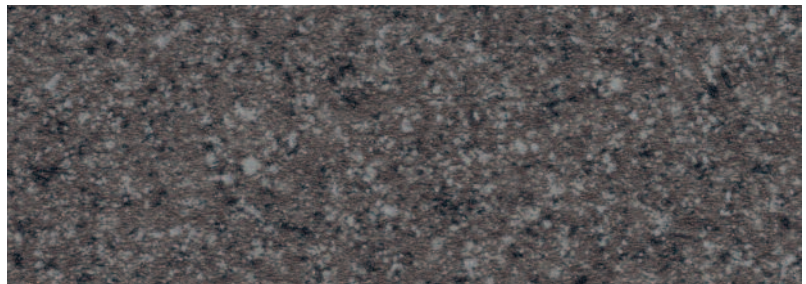
Flint 9807 w/r 9807

NCS S 4502-R



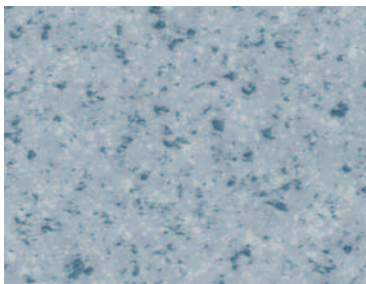
Lazulite Blue 9808 w/r 9808

NCS S 6010-R90B



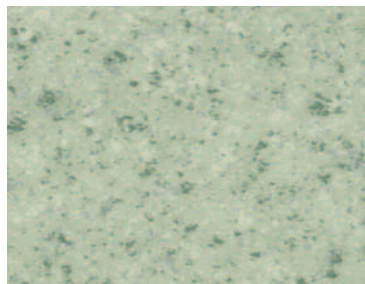
Onyx 9805 w/r 9805

NCS S 7502-R



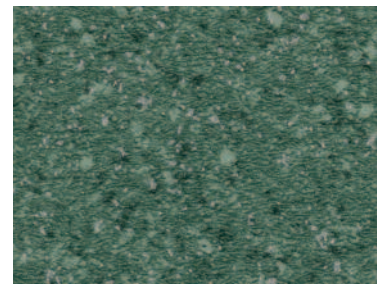
Celestine Blue 9806 w/r 9806

NCS S 3010-R90B



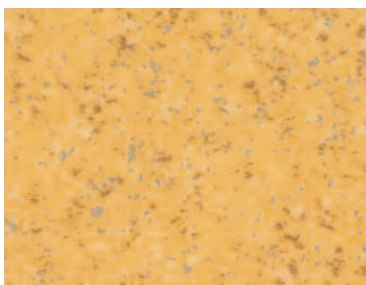
Euclase Green 9809 w/r 9809

NCS S 3010-G50Y



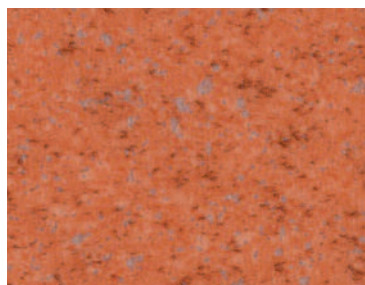
Olivene Green 9810 w/r 9810

NCS S 6010-G10Y



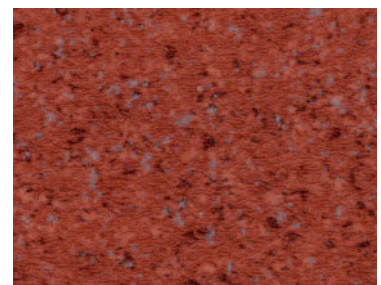
Topaz 9811 w/r 9811

NCS S 2040-Y10R



Amber 9812 w/r 9812

NCS S 3040-Y60R



Corundum Red 9813 w/r 9813

NCS S 5040-Y80R

Decoration and shade may vary slightly from the samples shown.



\* Refer to BRE Global ratings on [www.greenbooklive.com](http://www.greenbooklive.com)

